



Project \_\_\_\_\_

Item No. \_\_\_\_\_

Quantity \_\_\_\_\_

# TK140BCF-2 Blast Chiller & Shock Freezer Roll-In



TK140BCF-2

## CAPACITY

- Three angle guide racks, for a total of up to 120 food pans
- Three universal guide racks, holds 120 food pans or 60 sheet pans
- Three combi oven racks
- Any size racks up to 35"(W) x 38"(D) x 75"(H)

## PERFORMANCE

TK140BCF-2 blast chills up to 1400 lb of product from 165°F to 37°F within 2 hours and shock freezes 930 lb of product from 165°F to 0°F within 4 (R-404A)-5 (R-448A) hours when the condensing unit used is model TK140BCF-CU-A or TK140BCF-CU-W (Remote condensing unit is optional. This model can be connected to a medium/low temperature refrigeration rack system.)

## CONSTRUCTION

- The blast chiller cabinet is constructed of four-inch panels with a patented DURATHANE 100% urethane tongue and groove hard rail perimeter, foamed-in-place CFC-free polyurethane insulation with an exterior of polished 304 stainless steel and the interior of mirrored finish 304 stainless steel
- The door is mounted to a heavy-duty reinforced steel "U" channel frame that is foamed in place to provide additional support and rigidity to prevent racking and twisting of the door section
- The unit has a two-inch reinforced floor fabricated of 304 stainless steel as standard.

## REFRIGERATION SYSTEMS

- All required electrical and refrigeration components are fully assembled on a 304 stainless steel standalone uniframe modular chiller system which allows for quick and easy installation
- Utilizes R-404A or R-448A refrigerant

## CONTROL SYSTEMS

- The TK140 control system is based on the latest microcontroller technology and comes standard with one food probe and one air probe that monitor temperatures and control the unit while operating in the fully automatic mode
- The unit is also fully functional in manual mode
- Various cycles are available: soft chill, hard chill, evaporator defrost, thaw (optional), and ultraviolet light sterilization (optional)
- The controller has a real time clock and storage capabilities for up to 150 recipes for documentation purposes as well as a built-in dry contact for an external alarm/phone dialer connection

## ELECTRICAL

- TK140BCF-2 is 208VAC, 1Ph, 60Hz, 20 Amps circuit
- Fuse Size: 20 Amps; Cable Size: #12-3 AWG

## WARRANTY

The warranty covers parts found to be defective and the labor required to replace them for a period of one year from the date of shipment

## OPTIONS & ACCESSORIES

- Exterior ramp (24" or 32" deep)
- Serial printer for complete HACCP documentation
- Label printer for complete HACCP documentation
- PC connection for complete HACCP documentation
- SD card for complete HACCP documentation
- Rear door for pass-thru operation
- Remote condensing unit
- Mobile Racks
- Additional prefabricated floor thicknesses available

## CERTIFICATIONS



Intertek

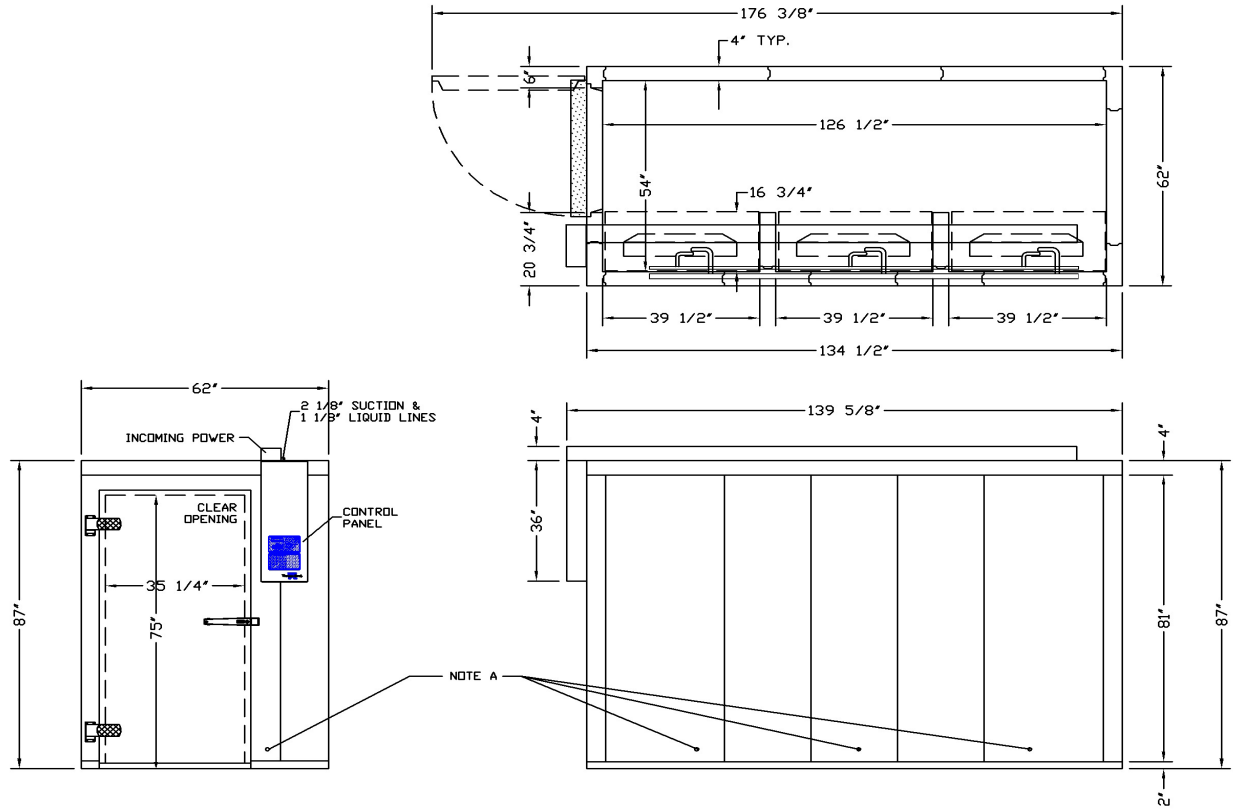


723 East 21st Street, Laurel, MS 39440  
Phone: 800-647-7074 | [www.thermokool.com](http://www.thermokool.com)

Revision B/3/2024  
Specifications are subject to change without notice and are not intended for installation purposes.



# TK140BCF-2 Blast Chiller & Shock Freezer Roll-In



ELECTRICAL SPECIFICATIONS	
TK140BCF-2	208VAC, 1Ph, 60Hz, 20 Amps Circuit
PRODUCT LOAD PER CYCLE	
Chills up to 1440 lb from 165°F to 37°F within 2 hours Freezes up to 930 lb from 165°F to 0°F within 4 (R-404A)-5 (R-448A) hours	
REQUIRED REFRIGERATION	
156000 Btu/H (20°F Evap. Temp./110°F Cond. Temp.) Medium & Low Temp., R-404A or R-448A	
REFRIGERATION LINES	
2-1/8" Suction Line, 1-1/8" Liquid Line	
SHIPPING INFORMATION	
SHIPPING WT. (LBS)	Shipping: 2600
FREIGHT CLASS	110

OVERALL DIMENSIONS	
HEIGHT	87"
WIDTH	62"
DEPTH	139.625"
WEIGHT	2600 lb
DOOR CLEAR OPENING DIMENSIONS	
HEIGHT	75"
WIDTH	35.25"
MINIMUM CLEARANCE	
LEFT/RIGHT/BACK	20"/20"/20"

Due to periodic changes in designs, methods, procedures, policies and regulations, the specifications contained in this sheet are subject to change without notice. While Thermo-Kool® exercises good faith efforts to provide information that is accurate, we are not responsible for errors or omissions in information provided or conclusions reached as a result of using the specifications. By using the information provided, the user assumes all risks in connection with such use.